



WHAT WE WILL COVER

- A BRIEF HISTORY OF COMMONWEALTH STADIUM PLAYING SURFACES
- THE RUMORS, QUESTIONS, AND ANSWERS TO CONVERTING TO SYNTHETIC TURF
- COLLEAGUES, VISITING AD'S AND COACHES, AND SYNTHETIC TURF REPRESENTATIVES OPINION OF OUR GRASS FIELD
- THE INTERESTING BIDDING PROCESS
- AND HOW OUR JOB HAS CHANGED

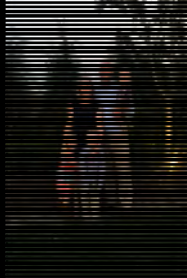
DISCLAIMER

- THIS TALK IS NOT INTENDED TO APPLY SHAME OR QUESTION ANYONE'S DECISION TO CONVERT COMMONWEALTH STADIUM
- THIS IS INTENDED TO REVEAL ALL OF THE BEHIND THE SCENE DRIVING FACTORS THAT FOLKS USE TO JUSTIFY THEIR DECISION
- I LOVE THE UNIVERSITY OF KENTUCKY AND WANT NOTHING BUT THE BEST FOR OUR STAFF, COACHES, ATHLETES, AND FANS. I AM A BORN AND RAISED MEMBER OF THE BIG BLUE NATION (but there is no such thing as a dream job). I strive each and every day to be a professional representative!

WHY I LOVE WORKING AT UK



WHY I DO WHAT I DO



JOB DESCRIPTION

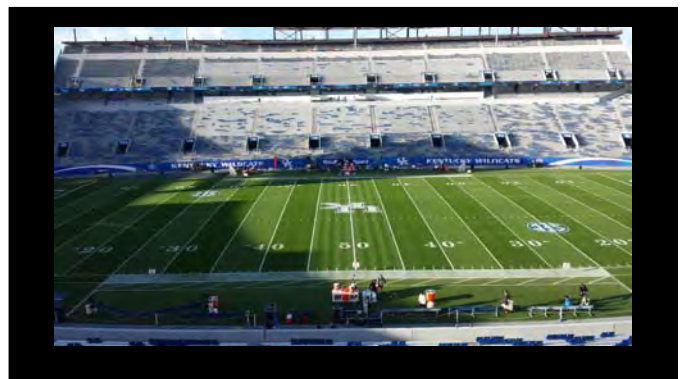
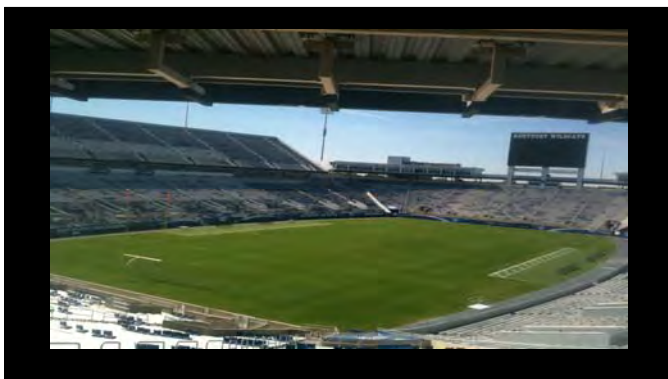
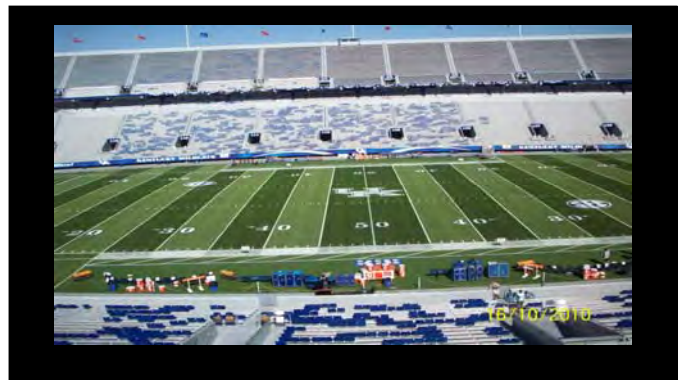
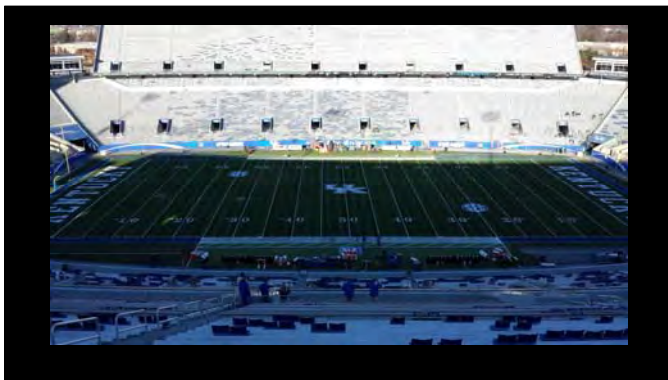
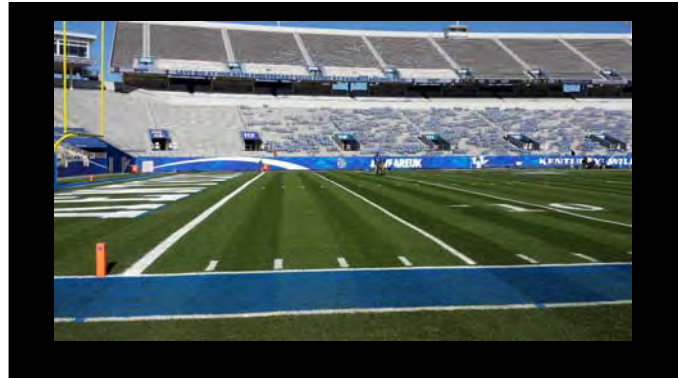
AS A SPORTS TURF MANAGER OUR JOB IS TO PROVIDE THE SAFEST HIGHEST QUALITY FIELD FOR EVERY ATHLETE TO PLAY ON.

Slide 1

DMD1 Dean, Marcus D, 2/16/2016

COMMONWEALTH STADIUM FACTS

- STADIUM WAS BUILT IN 1974
- 1974-2014 NATURAL GRASS, BERMUDA EVERY YEAR OF SOME VARIETY
- 1999 STADIUM EXPANSION
- 2001 FIELD RENOVATION, \$1.2 MILLION; INSTALLED A 12 INCH USGA SPEC FIELD, DRAINS ON 10 FT CENTERS IN A HERRIBONE PATTERN, TURF GRIDS TILLED IN, 3/4" SLOPE, BIG GUN IRRIGATION, SUB AIR CONNECTION, ARTIFICIAL TURF BENCHES (which we have always had), A RUBBERIZED TRACK ALL THE WAY AROUND, SPRIGGED IN QUICKSTAND FROM CHARLES WILLIAMS SOD FARM
- 2005 STRIPPED AND SPRIGGED BACK IN W/ TIFWAY 419



TALK OF CONVERTING TO SYNTHETIC

- MARK STOOPS HIRED AS FOOTBALL COACH IN DECEMBER OF 2012
- DURING MY 2012 EVALUATION IN FEBRUARY OF 2013 I WAS ASKED "WHAT DO YOU THINK ABOUT SYNTHETIC TURF?"
- "WHY AND WHERE" WAS MY RESPONSE
- I WAS TOLD "TO THINK ABOUT SYNTHETIC TURF AT THE STADIUM"
- THIS REALLY PISSED ME OFF AND I IMMEDIATELY CALLED A MENTOR OF MINE TO DISCUSS. BUCKY TROTTER SAID "INTERESTING, THIS EXPLAINS WHY JEFFREY L BRUCE CALLED A FEW WEEKS AGO AND SAID HE HEARD UK WAS GOING SYNTHETIC"

TALK OF CONVERTING TO SYNTHETIC

- SO FROM FEBRUARY OF 2013 TO THE SUMMER OF 2014, WE (as a group) KEPT ASKING WHY AND WHO WANTS IT
- EVERY PERSON WE TALKED TO GAVE US A DIFFERENT REASON AND PERSON WHO WANTED IT BUT THE ONE COMMON RESPONSE WAS THAT A DECISION HAD NOT BEEN MADE
- SO BEFORE THIS NEW COACH AND STAFF SEEN OR PLAYED ON ONE OF OUR FIELDS, SYNTHETIC WAS MENTIONED (in February 2013)
- DURING THE 2013 SEASON, SYNTHETIC TURF COMPANIES WERE COMING IN TO SPEAK W/ OUR ADMINISTRATION. DURING THE WEEK OF OCTOBER 12, WHILE WE WERE PAINTING, THEY BROUGHT SOME REPRESENTATIVES OUT TO LOOK AT AND WALK THE FIELD WITHOUT TELLING US OR INCLUDING US. IT WAS A VERY ACKWARD TIME.

TALK OF CONVERTING TO SYNTHETIC

- JUNE 19, 2014-I HAD A MEETING W/ MY SUPERVISOR AND HIS SUPERVISOR TO DISCUSS AN ASSISTANT AD'S JOB THAT I HAD APPLIED FOR. IT WAS A VERY QUICK MEETING....**WE HAVE ALREADY HIRED SOMEONE, DO YOU HAVE ANY QUESTIONS? YES, ARE WE SWITCHING TO ARTIFICIAL TURF IN THE STADIUM? WE HAVEN'T DECIDED YET.**
- 2014 SEC MEDIA DAYS, MIDDLE OF JULY; MARK STOOPS ANNOUNCES THAT UK WILL BE SWITCHING ITS PLAYING SURFACE TO SYNTHETIC TURF IN 2015 "we just can't get on the stadium field enough"
- WHERE DID THAT COME FROM? WE KNEW THE DECISION HAD BEEN MADE.

Mid August 2016

- THE FOOTBALL TEAM WANTS TO PRACTICE AT OUR OLD PRACTICE FACILITY BECAUSE THEY FEAR THEY ARE TEARING THE NEW FIELDS UP
- THEY THINK THEY ARE TEARING THEM UP BECAUSE WE ARE ADDRESSING THE FIELD EACH DAY; DOING A DIVOT WALK, MOWING THE FIELDS, SWEEPING THE FIELDS, AND ROLLING THE FIELDS (NOT ALL EVERYDAY)
- I ASSURED THEM THEY WERE NOT TEARING THE FIELDS UP AND APPRECIATED THEM WANTING TO GIVE THE NEW ONES A BREAK; I SUGGESTED THAT THEY GO INSIDE THE STADIUM FOR A FEW PRACTICES IF THEY WERE THAT CONCERNED.....

AND THE ANSWER.....

- "THE STADIUM JUST ISN'T BIG ENOUGH FOR US TO EFFECTIVELY PRACTICE, WE WOULD HAVE TO CONDENSE THE AREA WE DO A BUNCH OF DRILLS."
- THIS RESPONSE LET ME KNOW THAT MARK STOOPS WAS NOT THE PERSON THAT WANTED SYNTHETIC TURF IN COMMONWEALTH STADIUM.
- SO WHO AND WHAT WAS THE DRIVING FACTORS? I WAS ON ANOTHER MISSION TO FIND OUT MORE ANSWERS. SO I TALKED TO THE EXECUTIVE ASSOCIATE AD/ADMINISTRATION AND PERFORMANCE FOR ANSWERS

- THE EMAIL CONTAINED A LOT OF QUESTIONS; WHAT WAS THE REAL REASON TO SWITCH, WHO WANTED IT, AND WHAT WAS THE COMPLAINT ABOUT THE GRASS BECAUSE WE NEVER HEARD A SINGLE ONE, ZERO, ZILCH, NADDA, NOTHING. OH AND WHEN DID THEY PLAN TO REPLACE THE SYNTHETIC WITH NEW SYNTHETIC
- "WE KNEW WE HAD TO RENOVATE OUR FIELD BECAUSE WE HAD A CRANE SITTING ON IT FOR OVER 6 MONTHS. WE HAD ESTIMATED THAT GOING BACK W/ GRASS WOULD COST US \$400,000, SO MYSELF AND ANOTHER AD DECIDED THIS WAS A GOOD TIME TO TRY SYNTHETIC TURF. AS FAR A REPLACING THE SYNTHETIC; WE WILL GO BACK TO GRASS AT SOME POINT, WE JUST DON'T KNOW WHEN. WE ARE IN SEASON 2 OF THE TURF, SO ONCE WE GET TO SEASON 5 WE WILL START DISCUSSING THIS."

AFTER 2 SEASONS WE HAVE HAD

- ALL OF OUR NORMAL SCHEDULED FOOTBALL GAMES, A FRIDAY "RUN THROUGH" FOR EACH HOME GAME AND ROAD GAME PLAYED ON SYNTHETIC, NORMAL SPRING SCRIMMAGES, LESS FALL SCRIMMAGES THAN WE HAD ON GRASS, 1 STUDENT ATHLETE MOVIE NIGHT, 1 STUDENT ATHLETE GAME NIGHT, A FEW TRACK TEAM STRETCHES, AND KICKERS AT VARIOUS TIMES THROUGH OUT THE SEASON. BUT BUT WE HAVE NOT HAD ANY FAN DAY ENTIRE TEAM AUTOGRAPH SIGNINGS NOR ANY MORE 50 YARD LINE DONOR DINNERS ON THE FIELD LIKE WE DID EVERY YEAR WITH GRASS

MARK 6: 2-3

"Where did this man get these things?" they asked. "What's this wisdom that has been given him? What are these remarkable miracles he is performing? ³ Isn't this the carpenter? Isn't this Mary's son and the brother of James, Joseph, Judas and Simon? Aren't his sisters here with us?" And they took offense at him.



TALK OF CONVERTING TO SYNTHETIC

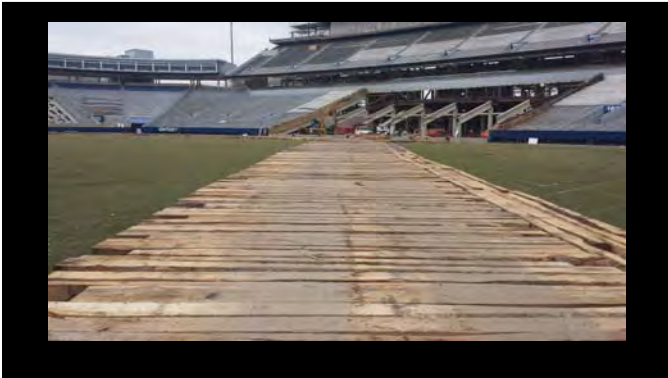
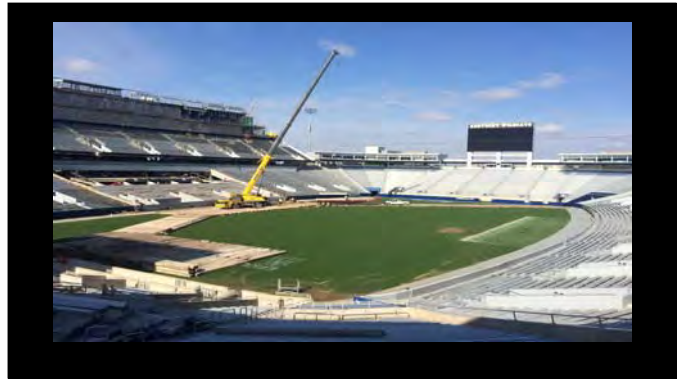
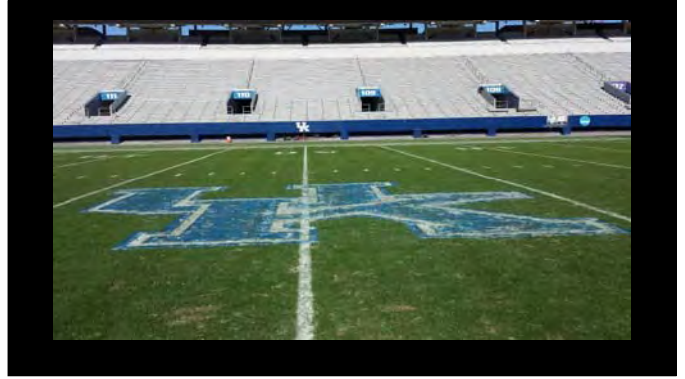
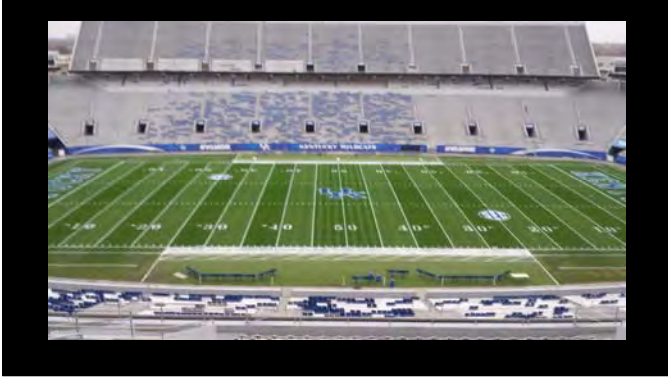
- AT THAT POINT I STARTED ASKING IF I COULD BE INVOLVED IN WRITING THE SPECIFICATIONS FOR THE FIELD. I ASKED ON 2 OCCASIONS AND THE RESPONSE I RECEIVED BOTH TIMES WERE; "WE WILL LET THE SPORTS TURF MANAGER KNOW WHEN HE IS NEEDED."
- ON OCTOBER 23, 2014 THERE WAS A PRE PROPOSAL BID MEETING FOR THE SYNTHETIC TURF PROJECT. A SYNTHETIC TURF REP APPOLOGIZED TO ME FOR SWITCHING TO TURF, BUT REASSURED ME THAT I WOULD HAVE MORE FREE TIME AND IT WOULD BE EASIER. THEN THAT SAME GENTLEMAN WALK OUT ONTO OUR PLAYING FIELD AND SAID "I REALLY DON'T KNOW WHY WE ARE HERE, THIS FIELD DOESN'T NEED TO BE SWITCHED BUT IF THEY WANT TO PAY ME WE WILL DO IT."
- THAT WAS A REASSURING MOMENT FOR ME, AS A TURF MANAGER, THAT AS A TEAM WE KNEW WHAT WE ARE DOING.

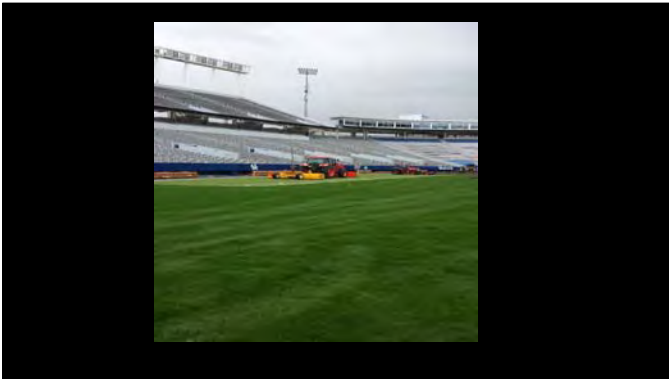
THE BIDDING PROCESS

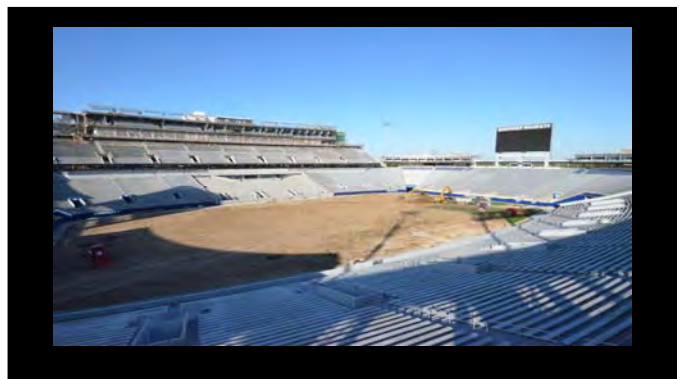
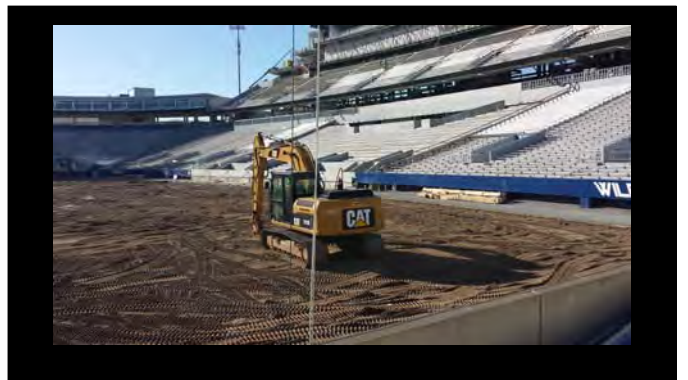
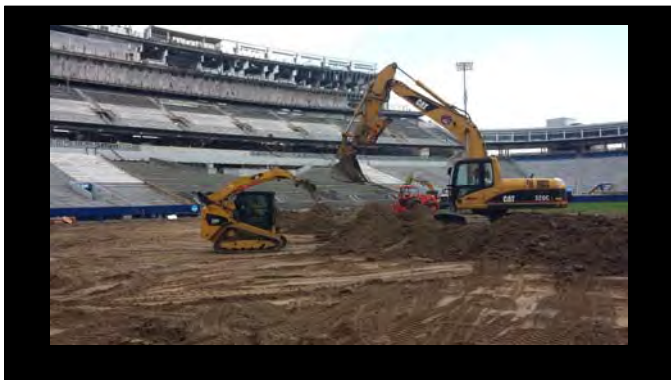
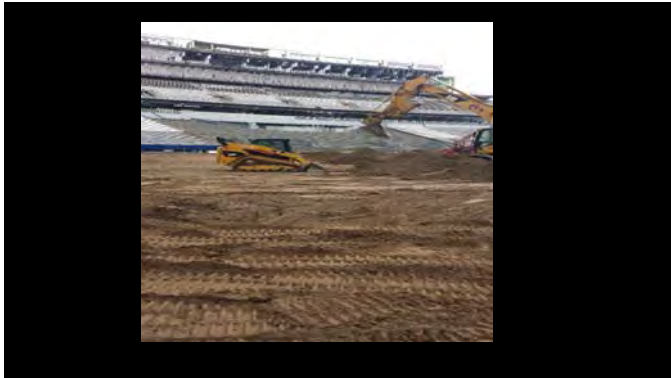
- WE, TOMMY DAVIS AND MYSELF, ARE INVOLVED NOW. THEY WANT OUR OPINION AND EXPERTISE.
- THERE WERE 5 COMPANIES THAT BID ON OUR STADIUM; FIELD TURF, UBU, HELLAS, MOTZ, AND SHAW.
- AFTER REVIEWING THE PROPOSALS WE SHORT LISTED THE 5 DOWN TO 3; FIELD TURF, UBU, AND MOTZ.
- WE THEN HAD 3 ON CAMPUS INTERVIEWS AND DECIDED TO ASK ALL 3 COMPANIES FOR THEIR BEST AND FINAL OFFERS
- WE CHOOSE UBU, WHICH WAS THE MOST EXPENSIVE BID, BUT ALL 3 WERE WITHIN A REASONABLE AMOUNT, MEANING IT WAS COMPETITIVELY PRICED (10%) AND NO ONE WAS UNDER BIDDING THE OTHER.

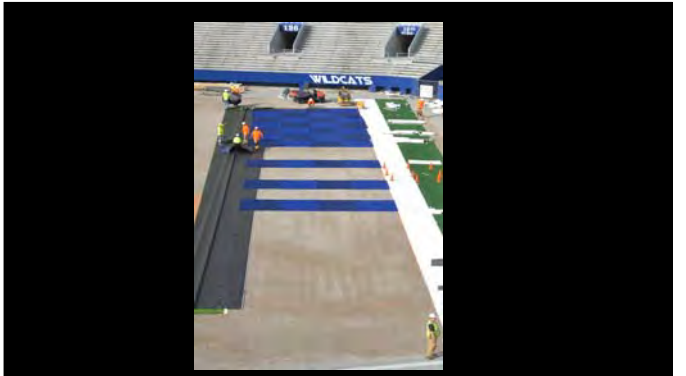
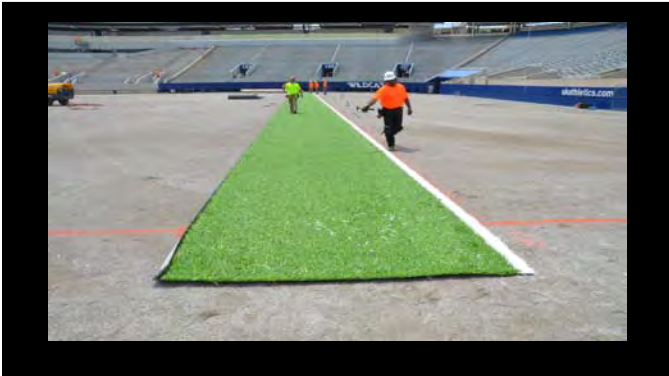
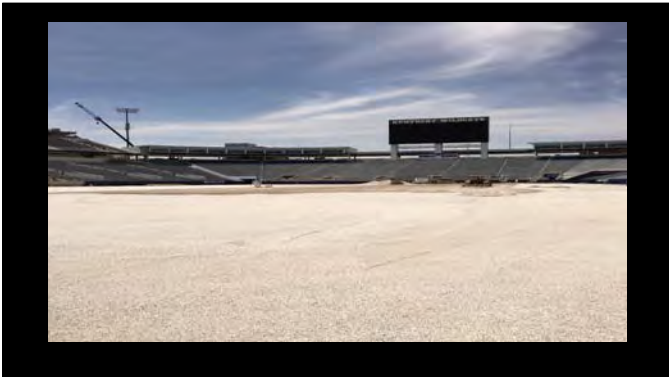
UBU S5 TURF

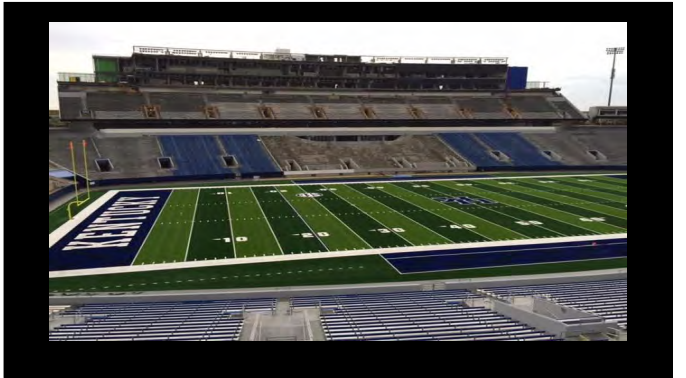
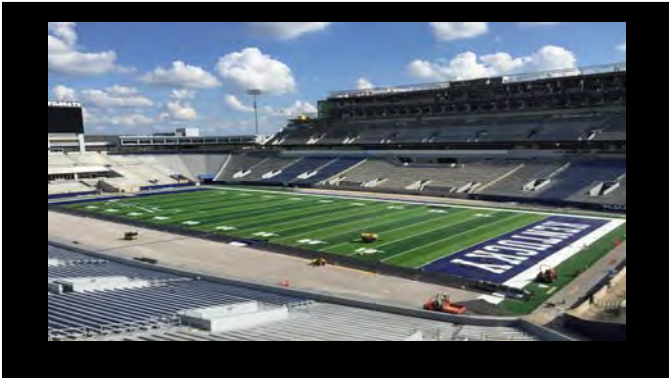
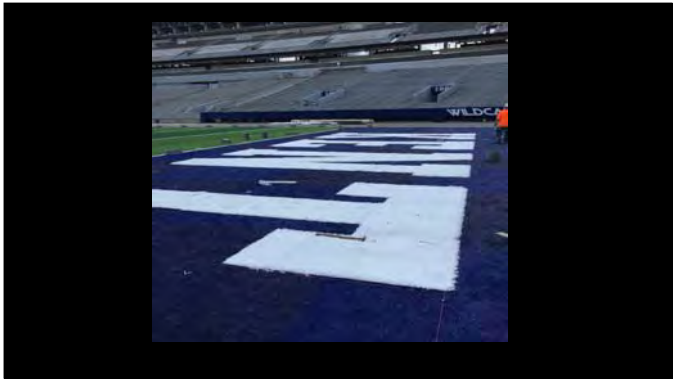
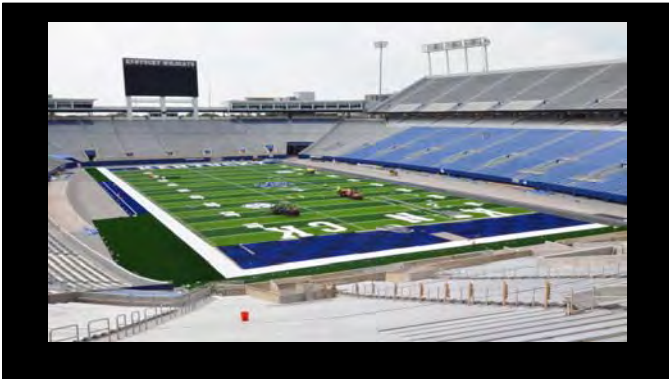
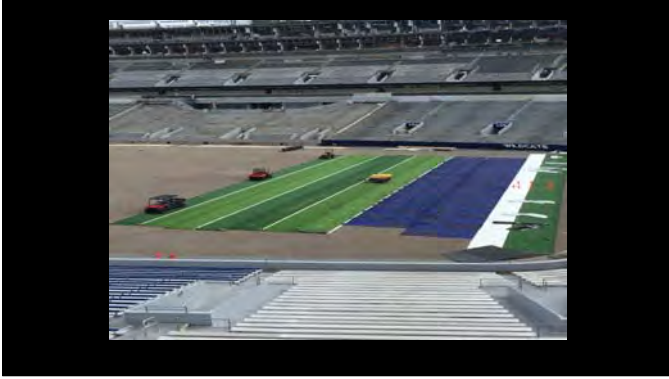
- 3/8 STICH GAUGE
- 2.5" PILE HEIGHT
- 51 OZ PER SQUARE YARD OF CARPET
- 3.9 POUNDS OF RUBBER AND 1.7 POUNDS OF SAND
- UBU'S ON CAMPUS INTERVIEW SEALED THE DEAL. THE COMPANY'S PRESIDENT AND FOUNDER, MARK NICHOLLS, STOLE THE SHOW. HIS RESEARCH AND DEVELOPMENT ON UBU MADE SENSE AND HIS EXPERIENCE ASSURED US THIS WAS THE RIGHT COMPANY.

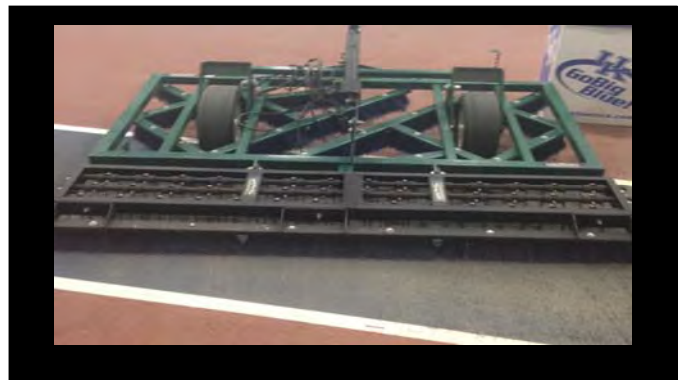
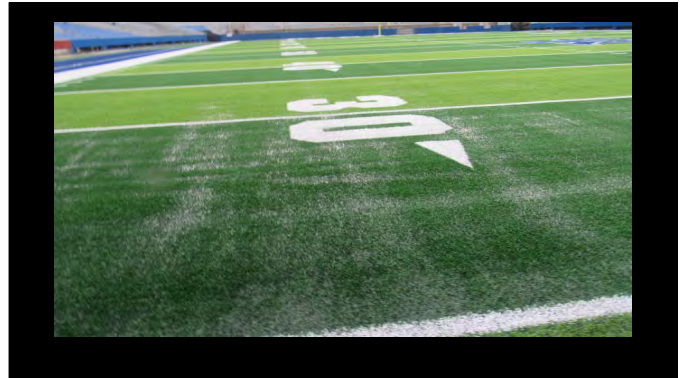
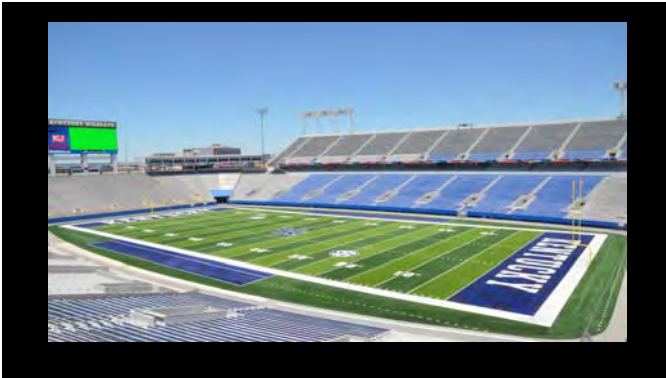












GROOMING INSTRUCTIONS

THIS WAS THE MOST EDUCATIONAL EXPERIENCE WE HAVE EVER HAD ON SYNTHETIC TURF.

- MAIN OBJECTIVE; KEEP THE FIBERS STANDING UP
- USE FREEZE SPRAY TO REMOVE BUBBLE GUM
- MARK ALL REPAIRS ON A FIELD DIAGRAM
- NO THIN TIRES ALLOWED ON THE FIELD
- MAKE SURE YOU USE WASHERS/SPACERS ON YOUR HOOK UP PIN SO THAT MACHINE WILL NOT BOUNCE
- MAKE SURE YOUR BROOM IS LEVEL ONCE YOU HAVE LOWERED IT, PLACE BRUSHES AT RUBBER LEVEL
- SPRING TINE ADJUSTMENTS; ¼" - 1/2" INTO RUBBER TO STAND FIBERS BACK UP AND LOOSEN TOP COAT OF CRUMB RUBBER
- REVERSE YOUR BRUSHES IF THEY ARE LEANING OUT AND REPLACE BRUSHES ONCE THEY HAVE LOST 1/3 OF THEIR HEIGHT (4" LONG NEW)
- GO VERY VERY VERY SLOWLY, MAKE LONG WIDE TURNS
- START IN THE BACK OF THE ENDZONE

GROOMING INSTRUCTIONS

- GO VERY VERY VERY SLOWLY, MAKE LONG WIDE TURNS
- START IN THE BACK OF THE ENDZONE, SIDE TO SIDE, MAKE YOUR TURN AND COME BACK ON THE OTHER SIDE OF THE 20 YARD LINE. ONCE YOU MAKE IT FROM THE ENDZONE TO THE 20 YOU WILL BE ON THE 50 AND SWITCH DIRECTIONS FOR THE OTHER HALF OF THE FIELD. WHEN COMPLETE MAKE 4 CLEAN UP PASSES ALONG THE OUTSIDE EDGE OPPOSITE OF THE DIRECTION YOU WERE TURNING. ALTERNATE YOUR STARTING POINT (WHICH SIDE AND DIRECTION YOU ARE GOING EACH TIME)
- GO END TO END OCCASIONALLY

MAINTENANCE PRACTICES PICK UP ALL TRASH ON THE FIELD



PICK UP ALL TRASH



MAINTENANCE PRACTICES

- WE WALK THE ENTIRE FIELD AFTER EACH EVENT AND 2-3 BETWEEN EVENTS TO PICK UP TRASH (NORMAL TRASH, SUNFLOWER SEEDS, GUM, MOUTH PIECES, TAPE, CUPS, PEANUTS, WOOD PIECES, INSULATION, METAL OBJECTS, ANYTHING THAT IS NOT CARPET OR RUBBER). WHICH IS COMPARABLE TO A DIVOT WALK POST GAME BUT 3 MORE TIMES A WEEK INSTEAD OF JUST POST GAME
- WE GROOM THE FIELD AFTER EACH EVENT (WHICH IS EQUIVALENT TO MOWING THE FIELD, NO TIME SAVINGS)
- THERE ARE NO CHEERLEADER OR DANCE TEAM MATS TO PUT OUT IN PREGAME, JUST INSTALL THE HYDRAULIC PUMPS ON THE GOAL POSTS, GOAL POST PADS, AND PYLONS (THEN WE ARE GAME READY). THERE IS A LOT OF TIME SAVED THERE, BUT WE NOW MUST THINK ABOUT WHAT TYPE OF HEATERS AND HOW MANY EACH TEAM IS BRINGING TO PROTECT THE TURF (REMEMBER THE PREVIOUS SLIDE WHERE I SAID WE HAVE ALWAYS HAD ARTIFICIAL TURF BENCH AREAS?)
- POST GAME IS ABOUT THE SAME AMOUNT OF TIME IF WE DO EVERYTHING: FIELD TRASH WALK, POST GAME FIELD GROOMING, REMOVAL OF PLYWOOD FROM HEATERS, REMOVING PYLONS AND GOAL POST PADS, AND TAKING OFF HYDRAULIC PUMPS FROM GOAL POSTS.
- THE ONLY DIFFERENCE IS.....

MAINTENANCE PRACTICES

- IF IT IS RAINING OR FIELD IS WET, WE WILL NOT GROOM
- WE DON'T NEED TO SOW MORE SEED, SPREAD SOME FERT, AND TURN WATER ON. PICK UP FIELD TRASH, SIDELINE TRASH, GET ALL PLYWOOD, PADS AND PYLONS, AND HEAD TO THE HOUSE!
- **NO WORRIES THIS STUFF IS MAINTENANCE FREE!**

COST DIFFERENCES.....

- THE SYNTHETIC TURF COST JUST UNDER \$700,000, AN UPFRONT INITIAL EXPENSE
- IT HAS BEEN CALCULATED THAT WE SAVE ALMOST \$56,000 A YEAR NOW AT THE STADIUM (NO FERT, NO HERBICIDES, NO SEED, NO PAINT (almost half of the \$56k), LESS FUEL, LESS MOWERS, LESS GAME DAY LABOR, AND NO NEED TO RESOD A FEW THIN SPOTS EACH YEAR)
- **BUT...**WE CAN GET OUT THERE ANY TIME WE WANT AND HOST MORE EVENTS

SYNTHETIC TURF MANAGER'S JOB DESCRIPTION

**AS A SPORTS TURF MANAGER
OUR JOB IS TO PROVIDE THE
SAFEST HIGHEST QUALITY FIELD
FOR EVERY ATHLETE TO PLAY ON.**

WHAT IS THE DIFFERENCE IN JOBS?

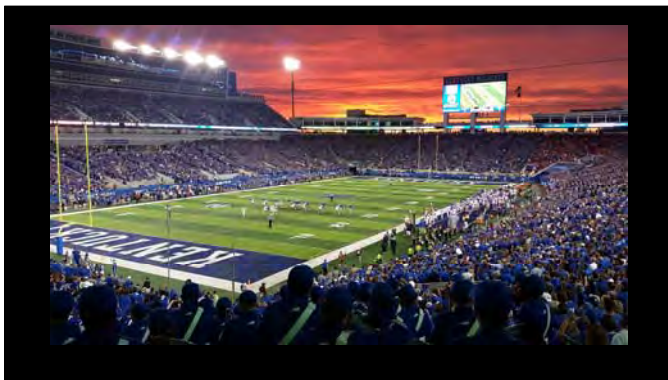
OUR JOB HAS NOT CHANGED, OUR GOAL IS STILL THE EXACT SAME THING!

WE STRIVE TO PROVIDE EACH AND EVERY ATHLETE THE SAFEST, HIGHEST QUALITY, AND AS CONSISTENT OF A FIELD AS HUMANLY POSSIBLE!

BUT EVERYTHING HAS CHANGED!

WHAT DID WE COVER

- A BRIEF HISTORY OF COMMONWEALTH STADIUM PLAYING SURFACES
- THE RUMORS, QUESTIONS, AND ANSWERS TO CONVERTING TO SYNTHETIC TURF
- COLLEAGUES, VISITING AD'S AND COACHES, AND SYNTHETIC TURF REPRESENTATIVES OPINION OF OUR GRASS FIELD
- THE INTERESTING BIDDING PROCESS
- AND HOW OUR JOB HAS CHANGED



??QUESTIONS??

COMMENTS

OR RUDE REMARKS
MARCUS DEAN, CSFM
SPORTS TURF MANAGER
UNIVERSITY OF KENTUCKY
marcus.dean@ukv.edu
859-230-7229